

## TWILIGHT FAMILY

WITH ITS TRENDY MODERN LOOK THE TWILIGHT IS CRAFTED TO COMPLEMENT THE HIGHEST STANDARD OF STORE DESIGN REQUIREMENTS.

Constructed using a premium grade German-made transparent Plexiglass body and stylish stainless steel base the Twilight also features discrete LED illumination that can be selected to compliment in-store lighting effects.



With built-in smart technology, engineered to filter out disruptive external electronic interference the Twilight provides security, good looks and outstanding detection.

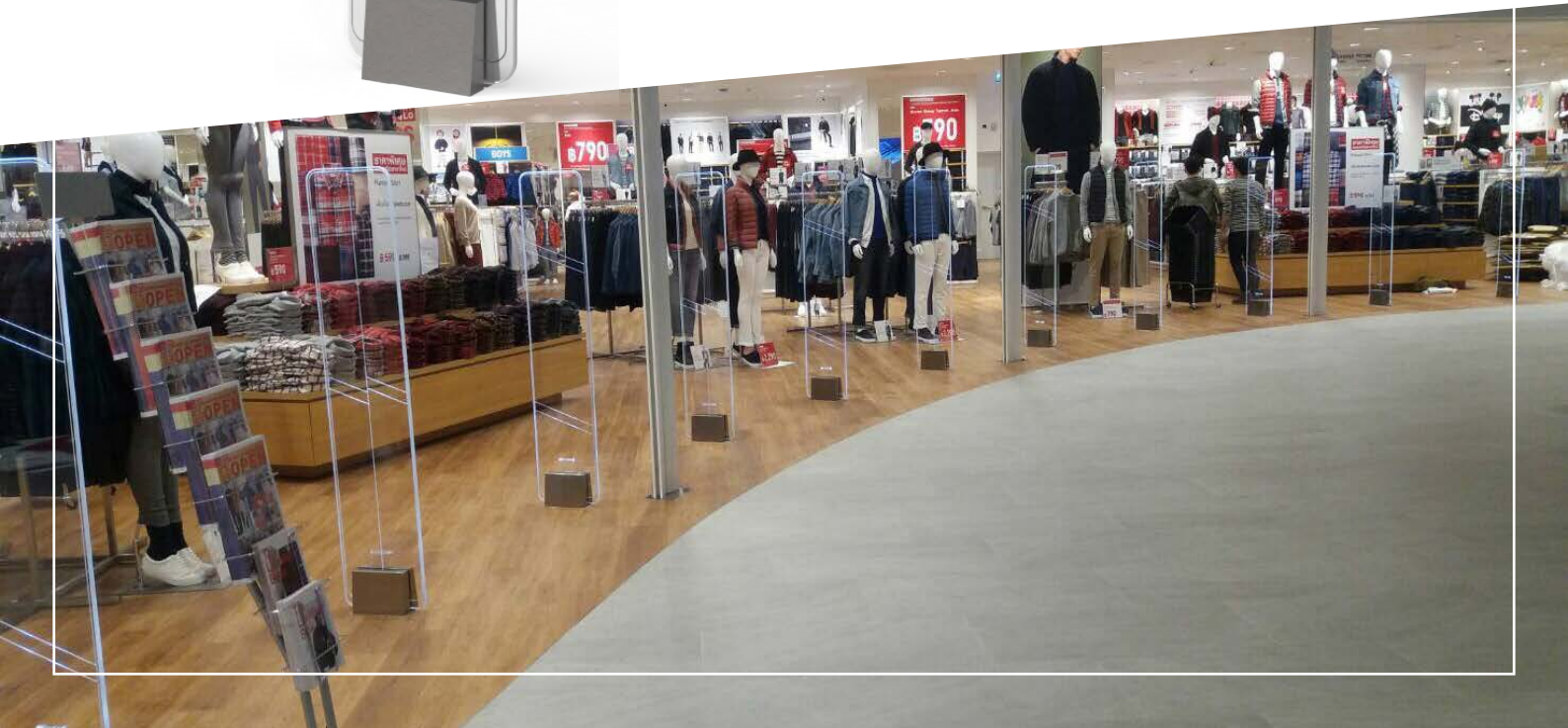
Twilight is the perfect solution for retailers who want a premium looking design without sacrificing that all important detection performance.

### KEY FEATURES:

- Crafted from German made Plexiglass
- Self-tuning capability testing eliminating outside electrical interferences.
- 4 LED colour illumination variations.
- TX/RX or TRX digital pulse listening system.
- 8.2 MHz based system

Two models:

- **Twilight Normal**
- **Twilight Large**



# Twilight N-150 RF AFT-TRx

P0200364

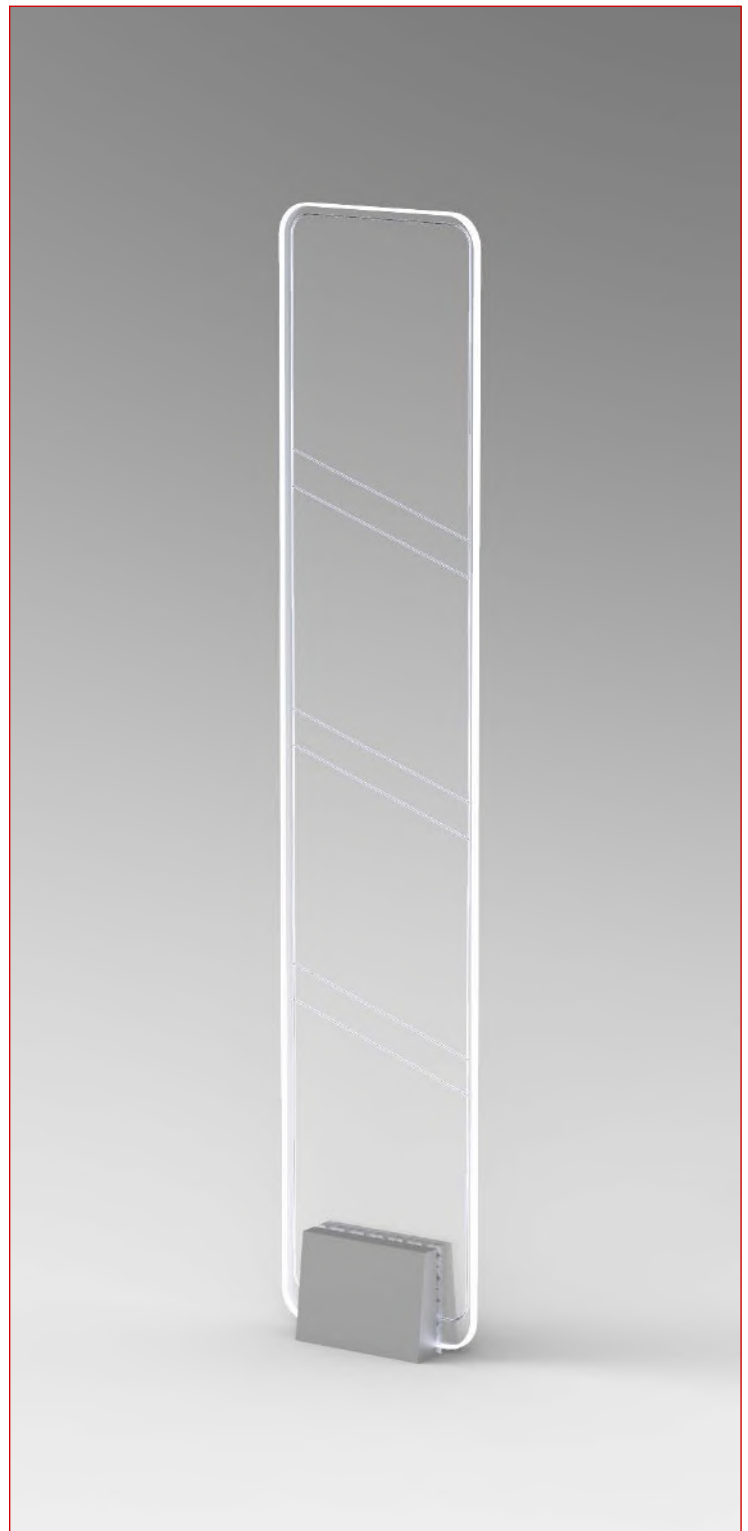
General Info	
Family	Twilight
Size	Normal
Type	TRx mono system

Recommendation 4x4 paper label	metric	imperial
Norm/Max Distance*	1,6/2m	78.74in
Norm/Max On side*	0.8/1m	39.37in
Recommendation round hardtag	metric	imperial
Norm/Max Distance*	2,4/2,8m	110.23in
Norm/Max On side*	1,2/1,4m	55.11in
Dimension		
Height	1,606m	63.23in
Width	0,328m	12.92in
Depth (thickness)	0,106m	4.17in
Approx. weight	12,2kg	26.84lbs

Electrical Requirements		
PSU	18V AC	
Power Consumption	10W	
Operating Temp.	0 - 40°C	32 - 104°F

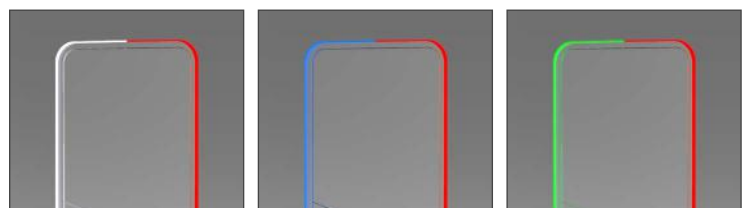
Other	
Antenna Safety	CB, UL/cUL
Emissions Safety	FCC/IC, CE
Materials Used	brushed inox steel base, plexiglass body

\*detection distance may vary, depends on **environment** and **tag type**.



**RMS**  
by shopguard

Available colours



white  
red on alarm

blue  
red on alarm

green  
red on alarm

Tx/Rx duo

TRx Alternating Field

# Twilight N-150 Tx/Rx

P0200031 / P0200035

## General Info

Family	Twilight
Size	Normal
Type	Tx / Rx system

## Recommendation

4x4 paper label

	metric	imperial
Norm/Max Distance*	2,6/3m	102/118in
Norm/Max On side*	1,3/1,5m	51/59in

## Recommendation

round hardtag

	metric	imperial
Norm/Max Distance*	2,4/3,8m	94/150in
Norm/Max On side*	1,7/1,9m	67/75in

## Dimension

Height	1,606m	63.23in
Width	0,328m	12.92in
Depth (thickness)	0,106m	4.17in
Approx. weight	12,2kg	26.84lbs

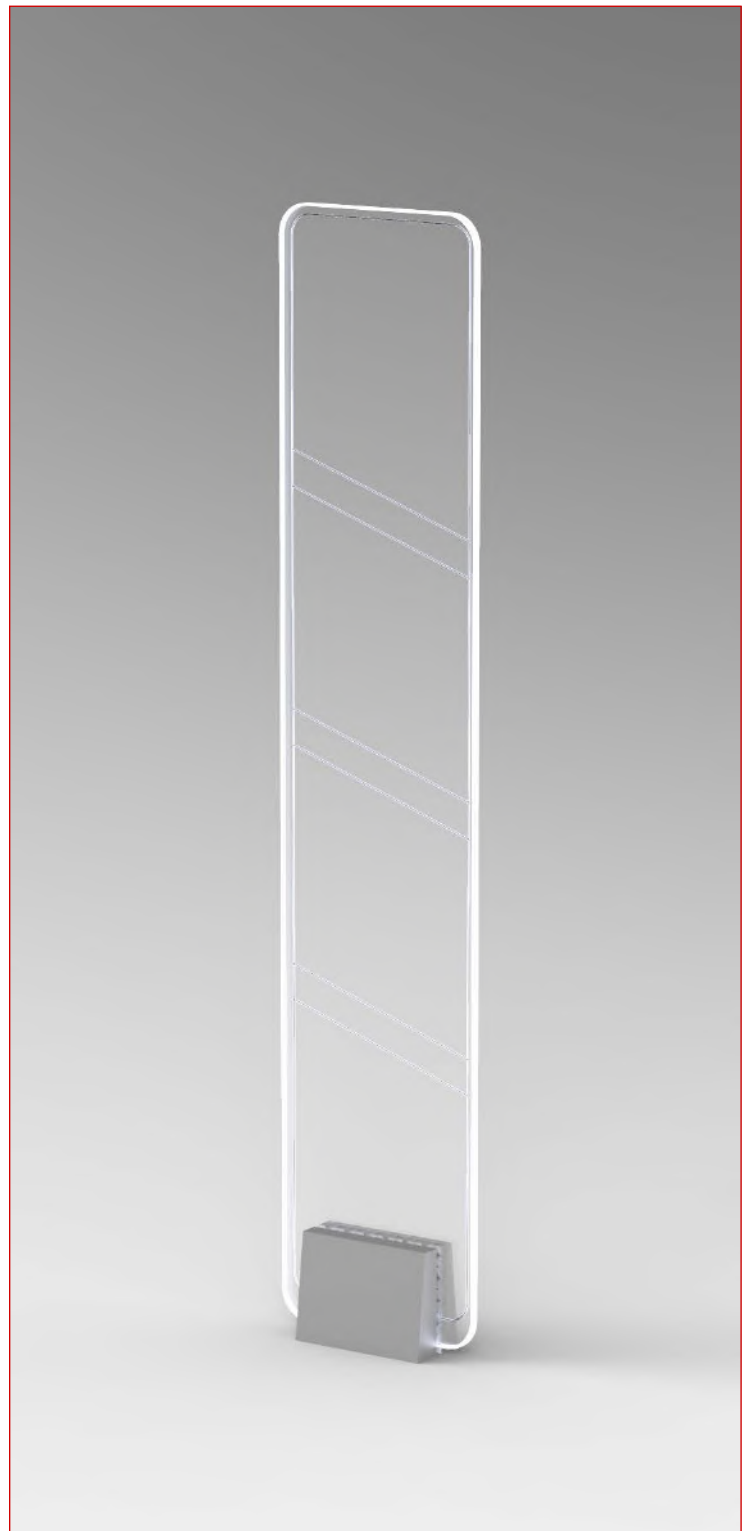
## Electrical Requirements

PSU	24V DC	
Power Consumption	4W/16,5W	
Operating Temp.	0 - 40 °C	32 - 104 °F

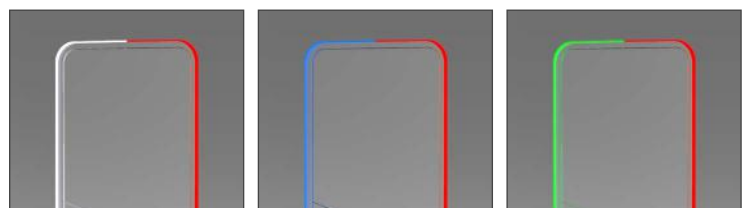
## Other

Antenna Safety	CB, UL/cUL
Emissions Safety	FCC/IC, CE
Materials Used	brushed inox steel base, plexiglass body

\*detection distance may vary, depends on **environment** and **tag type**.



## Available colours



white  
red on alarm

blue  
red on alarm

green  
red on alarm

Tx/Rx duo

TRx Alternating Field

# Twilight L-150

## RF AFT-TRx

P0200365

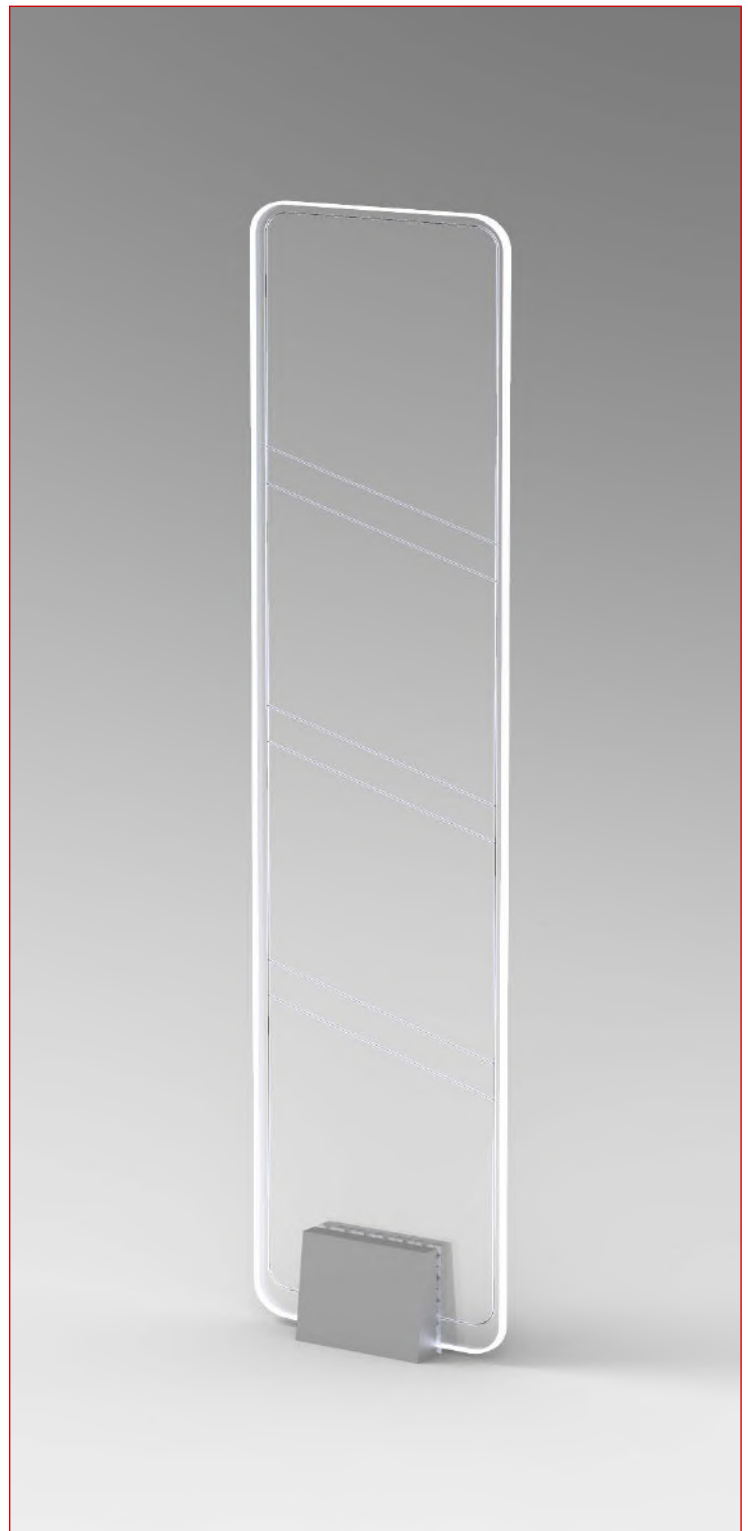
General Info	
Family	Twilight
Size	Large
Type	TRx mono system

Recommendation 4x4 paper label	metric	imperial
Norm/Max Distance*	1,8/2,2m	71/86in
Norm/Max On side*	0,9/1,1m	35/43in
Recommendation round hardtag	metric	imperial
Norm/Max Distance*	2,6/3m	102/118in
Norm/Max On side*	1,3/1,5m	51/59in
Dimension		
Height	1,606m	63.23in
Width	0,428m	16.73in
Depth (thickness)	0,106m	4.17in
Approx. weight	13,8kg	30.36lbs

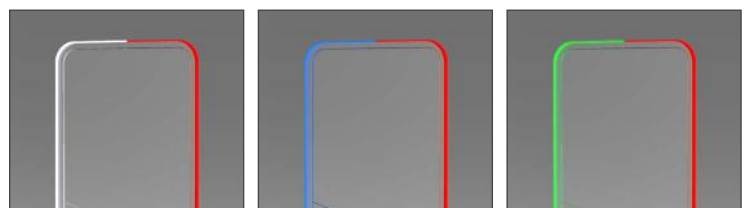
Electrical Requirements		
PSU	18V AC	
Power Consumption	10W	
Operating Temp.	0 - 40 °C	32 - 104 °F

Other	
Antenna Safety	CB, UL/cUL
Emissions Safety	FCC/IC, CE
Materials Used	brushed inox steel base, plexiglass body

\*detection distance may vary, depends on **environment** and **tag type**.



Available colours



white  
red on alarm

blue  
red on alarm

green  
red on alarm

Tx/Rx duo

TRx Alternating Field